

Y K G

Yutaka Kikutake Gallery

6-6-9 2F Roppongi, Minato-ku, Tokyo 106-0032, Japan
Tel: +81 (0)3 6447 0500 Mail: info@ykgallery.com
www.ykgallery.com



JAPANESE DESIGN

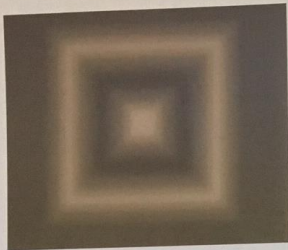
Art, Aesthetics & Culture

PATRICIA J. GRAHAM



TUTTLE





3. Emptiness

Mukaiyama Kisho (b. 1968), *Veda Intro no. 1*, 2011. Wax on paper, watercolor, wooden board, 38 x 45.5 x 2.8 cm. Collection of the artist. A devout Shingon Buddhist, Mukaiyama seeks to give visual form to the diffuse colors of light that he envisions in his prayers and describes the light that suffuses in his art as a tranquil presence.



4. Subtlety

Jinzenji Yoshiko (b. 1942), *Coconut Field*, 1993. Engineered Quilt series. Cotton, natural dye soja, and quilting, 250 x 200 cm. Helen Foresman Spencer Museum of Art, University of Kansas. Gift of the artist, 2007.0099. Jinzenji, one of Japan's most well-known quilt makers and commercially successful textile designers until her recent retirement, divided her time between Kyoto and Indonesia. She is best known for her innovative dyeing techniques that create muted, earthy colors from natural dyes. The color in this quilt comes from the bark of the Indonesian soja tree.



5. Flamboyance

Kusama Yayoi (b. 1929), *Pumpkin*, 1994. Fiber reinforced plastic (FRP), height ca. 120 cm. Fukuoka Municipal Museum of Art. Kusama is Japan's most famous avant-garde artist, an influential early member of the 1960s pop art movement in New York. Her bold, over-the-top designs bring to mind the traditional *bosara* aesthetic.



6. Color Potency

Yamaguchi Yuriko (b. 1948), *Autopoesis*, 2012. Ceiling installation of hand-cast and dyed resin with stainless steel wire, overall length 3901.44 x 304.8 cm. Crowell & Moring LLP, Washington, DC. Yamaguchi explores the interconnected nature of a universe comprised of organic cell-shaped forms drenched with radiant colors, recollecting the bold pooled application of colors in Rimpa paintings, the gradation effects in ukiyoe prints, and the resplendent colors associated with the Buddhist paradise.

3. Emptiness

Mukaiyama Kisho (b. 1968), *Veda Intro no. 1*, 2011. Wax on paper, watercolor, wooden board, 38 x 45.5 x 2.8 cm. Collection of the artist. A devout Shingon Buddhist, Mukaiyama seeks to give visual form to the diffuse colors of light that he envisions in his prayers and describes the light that suffuses in his art as a tranquil presence.